



BRUNOST SWEATER

Knitting pattern by TINE



BRUNOST SWEATER

The sweater is knitted in the round using a circular needle before all the parts are joined for a circular yoke with decreases.

Pattern and design by Kristin Wiola Ødegård.

Sizes:

S (M, L, XL)

Finished measurements:

Bust: 89 (99, 108, 117) cm/35 (39, 42.5, 46)"

Length: 60 (63, 65, 67) cm/23.5 (24.75, 25.5, 26.5)"

Sleeve length: 47 (48, 49, 50) cm/18.5 (19, 19.25, 19.75)"

Yarn:

Sandes Garn, Kos (62% baby alpaca, 9% wool, 29% nylon, 50 g, 150 m/164 yds)

Natural 1012 (main colour): 6 (7, 7, 8) skeins

Plum Light Melange 4050: 1 skein

Plum Melange 4360: 1 skein

Terracotta 3524: 1 skein

Dusty Light Blue 7522: 1 skein

Needles:

5 mm/US 8 circular needle (40 to 60 cm and 80 cm/16 to 24" and 32")

5 mm/US 8 Double Pointed Needles

4 mm/US 6 circular needle (80 cm/32")

4 mm/US 6 Double Pointed Needles

Gauge:

17 sts and 20 rounds in stranded colorwork in stockinette stitch measures 10 cm/4" square. Adjust needle size as needed to match gauge.

BODY:

Using main color and 4 mm/US 6 circular needle, cast on 152 (168, 184, 200) stitches (sts). Join for knitting in the round and place marker. Work in knit 1, purl 1, rib for 4 (4, 5, 5) cm/1.5 (1.5, 2, 2)".

Change to 5 mm/US 8 circular needle, using main color knit until Body measures 37 (39, 40, 42) cm/14.5 (15.25, 15.75, 16.5)" from cast on edge, bind off 8 sts in each side for armholes as follows:

Knit 68 (76, 84, 92) sts, bind off 8 sts, knit 68 (76, 84, 92) sts, bind off 8 sts.

Set body aside and work sleeves.

SLEEVES:

Using main color and 4 mm/US 6 Double Pointed Needles, cast on 40 (42, 44, 44) sts. Join for knitting in the round and place marker. Work in knit 1, purl 1, rib for 4 (4, 5, 5) cm/1.5 (1.5, 2, 2)".

Change to 5 mm/US 8 Double Pointed Needles, join in color as necessary, work in stranded colorwork in stockinette stitch after chart A. Count and adjust from marked center sleeve stitch where to begin in chart. At the same time increase 2 sts at underarm with 1 stitch on each side of marker every 3 (3, 2, 2) cm/1.25 (1.25, 0.75, 0.75)" until there are 60 (68, 68, 76) sts on needle.

After chart A, continue to knit in main color until Sleeve measures 47 (48, 49, 50) cm/18.5 (19, 19.25, 19.75)" from cast on edge, bind off 8 sts at underarm. 52 (60, 60, 68) sts on needle.

Set Sleeve aside and work one more Sleeve.

CIRCULAR YOKE:

Place all parts onto same needle. 240 (272, 288, 320) sts on needle.

Continue to work in the round, using main color knit 1 (3, 5, 5) rounds before you begin to work in stranded colorwork in stockinette sttich in chart B for yoke with decreases as described in the chart.

Change to a shorter circular needle when required.

When chart is completed there are 64 (68, 72, 80) sts remaining on the needle. Change to 4 mm/US 6 short circular needle and end with a k1, p1, rib over 3 (3, 3, 4) cm/1.25 (1.25, 1.25, 1.5, 1.5)" for neckband. Bind loosely off.

Join underarms and weave in ends.

Embroider "tine" (a traditional Norwegian wooden container to keep butter and cheese fresh) at bottom of left sleeve, above pattern border, in Plum Melange after chart.

Tine

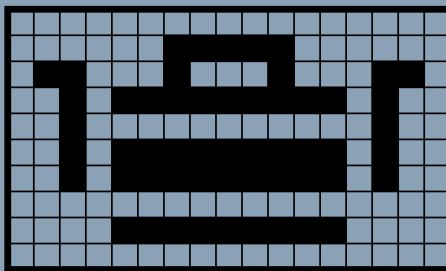
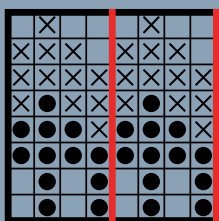


Chart A, bottom of sleeve

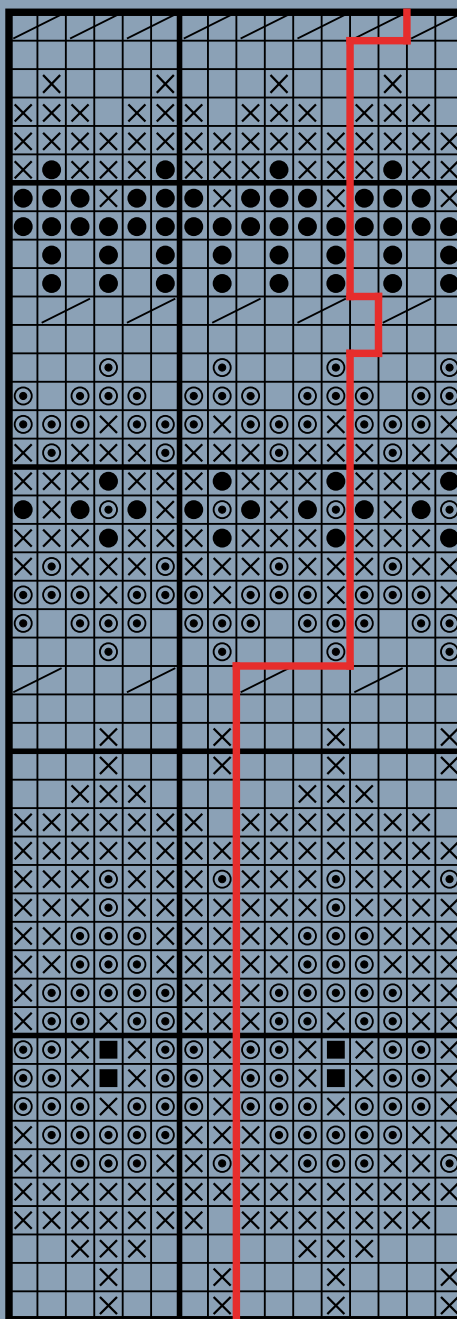


center sleeve

Key:

-  Natural
-  Plum Light Melange
-  Terracotta
-  Plum Melange
-  Light Blue, knit or embroider at end with duplicate stitch
-  knit 2 sts together
-  Pattern repeat

Chart B, yoke

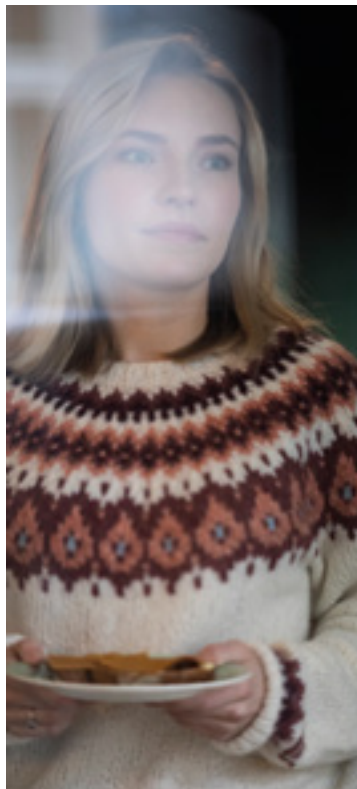


[knit 2 sts together] to end 60 (68, 72, 80) sts on needle

knit every 2nd & 3rd stitch together to end 120 (136, 144, 160) sts on needle

knit every 3rd & 4th stitch together to end 180 (204, 216, 240) sts on needle

begin here for all sizes 240 (272, 288, 320) sts on needle



A cosy wool sweater and a slice of bread with Brunost is what defines a Norwegian. A wool sweater with a pattern derived from the Brunost wrapping is just about as Norwegian as things can get. Enjoy knitting this beautiful sweater, and remember to treat yourself to a little Brunost in the process.

tinebrunost.com

